

[ProductsConsole Server](#)IOLAN SCG

[Print](#) [PDF](#)

# IOLAN SCG

## Out-of-Band IT Infrastructure Management



Get a quote

- 16, 32 or 48 RS232 RJ45 Console Management Ports
- 10/100/1000Base-T Copper Network Connection
- ZTP & [PerleVIEW Central Management Software](#) simplifies configuration, administration, monitoring, and troubleshooting.
- [Cloud Hosting](#) -- Deploy and manage your network from the cloud
- Advanced routing engine with AAA security and SSH/SSL encryption to meet all data center compliance policies

[Overview](#)

[Features](#)

[Hardware](#)

[Diagrams](#)

[Documentation](#)

[Ordering Details](#)

The **Perle IOLAN SCG Console Servers** provide data center managers with the ultimate solution for redundant, secure remote console management of any device with an **RS232 RJ45 console port**. With **integrated firewall, two-factor authentication, advanced failover to multiple networks, and Zero Touch Provisioning (ZTP)**, your IT professionals and network operations center (NOC) personnel will have everything they need to easily perform secure remote data center management and out-of-band management of IT assets from anywhere in the world. This cost-effective 1U rack solution also maintains protocol integrity across Ethernet and adds full IPv4/IPv6 routing capabilities with support for RIP, OSPF, and BGP protocols.



## Console Management for IT assets

The **IOLAN SCG Console Server** supports **RS232 RJ45 connectivity to console ports** on equipment such as **Cisco routers, switches, firewalls, servers** (Solaris, Windows, Unix and Linux) **PBXs, network storage equipment** and **security appliances** through an IP network. The RS232 RJ45 ports are software configurable to use straight thru or rolled cables to connect your Cisco equipment. In addition, a DCD pin can be configured for 3rd party devices that need this extra signal. The means the **Perle IOLAN SCG supports more serial devices than any other Console Server on the market**. This makes it an ideal out of band management solution for IT equipment located in data centers or remote sites.

## Advanced Network Security, Authentication, and Data Encryption

**2 Factor Authentication (2FA)** ensures access to equipment and data is limited to authorized users, while remote authentication (RADIUS, TACACS+, & LDAP) management, enables integration with enterprise-grade systems to control access to devices in the field.

The **built-in firewall** offers intuitive policies to protect inside networks from unauthorized access. The firewall also allows inside networks to be separated from each other. If there are network resources that need to be available to an outside user, such as a web or FTP server, these resources can be placed on a separate network behind the firewall in a demilitarized zone (DMZ).

Network data transmissions and access to remote console admin ports on IT equipment are protected through standard **encryption tools** such as Secure Shell (SSH) and Secure Sockets Layer (TLS/SSL). By using encryption technologies, an IOLAN SCR Console Server protects sensitive and confidential data before being sent across a corporate Intranet or public Internet. For compatibility with peer encryption devices, all the major encryption ciphers such as AES, 3DES, RC4, RC2, and CAST128 are fully supported.

With multiple concurrent VPN sessions, OpenVPN, and [IPSec VPN](#), robust authentication and encryption of IP packets is provided at the network layer of the OSI model. This is ideal for multi-vendor interoperation within a network, providing flexibility and the ability to match the right solution for a particular application.

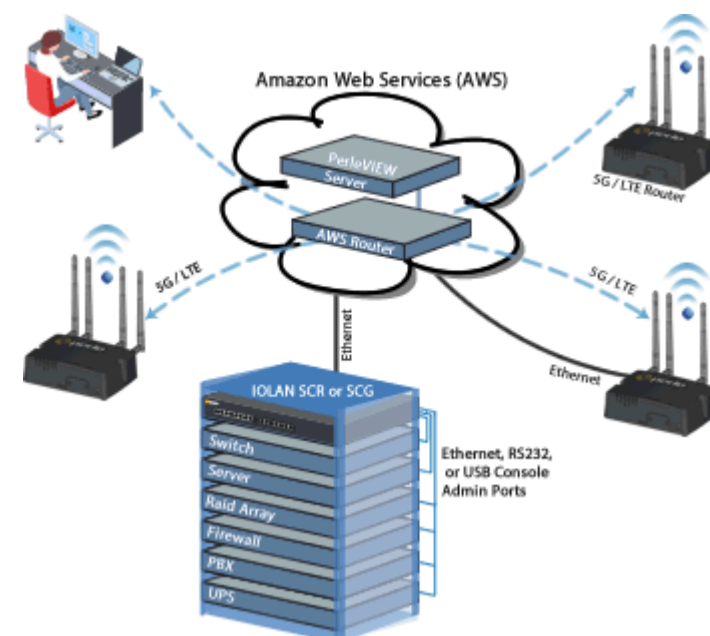
## High Availability Access

To simplify management and respond swiftly to issues, network administrators require access to all console ports via a single portal view. Perle's cloud-based centralized management solution puts all your network and IT infrastructure into a

single application and provides secure reliable access and visibility during normal operations and critical network failures. Scalable to suit any business requirement, [Cloud Centralized Management](#) reduces human error and guarantees repeatability.

The IOLAN SCG also has built-in fault-tolerant capabilities to ensure secure and reliable access for managing important mission-critical equipment. [Redundant Path technology](#) assures availability to Console Management ports through Active Standby or Dual Network Access modes. Virtual Router Redundancy Protocol (VRRPv3) enables a group of devices to form a single virtual device to provide network redundancy. The dual AC power supply ensures that console management is available even if the primary AC power source fails. And, protection against electrostatic discharges and power surges is provided with robust 15Kv ESD protection circuitry on each console port.

The auto-negotiating 10/100/1000Base-T Copper Port will meet any changing network access requirements. If you upgrade your Ethernet speed, you won't need to upgrade your IOLAN SCG.



## Easy Set-up and Configuration

The IOLAN SCG is incredibly easy to get up and running on the network. The unit can then be configured over the network using a variety of configurator options including [PerleVIEW](#), WebManager, CLI, etc.

For large scale roll-outs, the Micro SD Card slot can be used to back-up and restore configuration files as well as load new firmware. Perle is committed to eliminating configuration hassles for all IOLAN's on your IP network.

## Flexible and Reliable Serial to Ethernet Connections

An IOLAN SCG Console Server is ideal for connecting serial-based COM port, UDP or TCP socket-based applications to remote devices. Perle's [TruePort re-director](#) provides fixed TTY or COM ports to serial-based applications enabling communication with remote devices connected to Perle IOLAN's either in encrypted or clear text modes.

[TrueSerial® packet technology](#) delivers the most authentic serial connections across Ethernet for serial protocol integrity.

You can also tunnel serial data between devices across an IP network.

## Advanced IP Technology

With support for IPv6 the IOLAN SCG provides organizations with investment protection to meet this rapidly growing standard.

Demand for IPv6, which is compatible with IPv4 addressing schemes, is driven by the need for more IP address. With the implementation and rollout of advanced cellular networks, a robust method is needed to handle the huge influx of new IP addressable devices on the Internet. In fact, the US Department of Defense has mandated that all equipment purchased be IPv6 compatible. In addition, all major Operating Systems such as Windows, Linux, Unix and Solaris, as well as routers, have built-in support for IPv6.

It is therefore important for end users and integrators to select networking equipment that incorporates the IPv6 standard. The IOLAN line with support for IPv6 already built in, is the best choice in serial to Ethernet technology.

## More reasons that make the IOLAN SCSG Console Servers the preferred choice:

- Primary/Backup host functionality enables automatic connections to alternate hosts should the primary TCP connection go down
- [EasyPort Web](#) – Access equipment serial console ports by using your java-enabled Internet browser
- Java-free browser access to remote serial console ports via Telnet and SSH
- [Dynamic DNS](#) – Easy console management access from anywhere on the Internet

## Lifetime Warranty

All Perle IOLAN SCG models are backed by the best service and support in the industry including Perle's unique lifetime warranty. Since 1976 Perle has been providing its customers with networking products that have the highest levels of performance, flexibility and quality. With the Perle IOLAN SCG deploying and upgrading new services and equipment, while minimizing capital expenditures, is easy.

[Back To Top](#)

- [Products](#)
- [Applications](#)
- [About Perle](#)

- [Contact Us](#)
- [How to Buy](#)
- [Technical Support](#)

- [Site Map](#)
- [Legal Information](#)
- [Privacy & Cookie Policy](#)

Products by Perle



# Send us an Email



Have a Question?  
We can provide more information about our products or arrange for a price quotation.

Send an Email      [Call Us](#)