


[Products Console Server](#) IOLAN SCG LWM

Print PDF

# IOLAN SCG LWM Secure Console Server

## Out-of-Band IT Infrastructure Management with integrated LTE, Modem & WiFi


[Get a quote](#)

- 18, 34 or 50 Console Management Ports
- Modular design supports RS232/RS422/RS485 RJ45 and USB 3.0 Interfaces
- Integrated LTE, Wi-Fi® and v.92 modem for out of band access
- Dual 10/100/1000 Network Connection with RJ45 Copper and SFP Fiber Ports
- ZTP & [PerleVIEW Central Management Software](#) simplifies configuration, administration, monitoring, and troubleshooting.
- [Cloud Hosting](#) -- Deploy and manage your network from the cloud
- Advanced routing engine with AAA security and SSH/SSL encryption to meet all data center compliance policies
- Dual AC or Dual Feed 48vDC Power for Fault-tolerant uptime

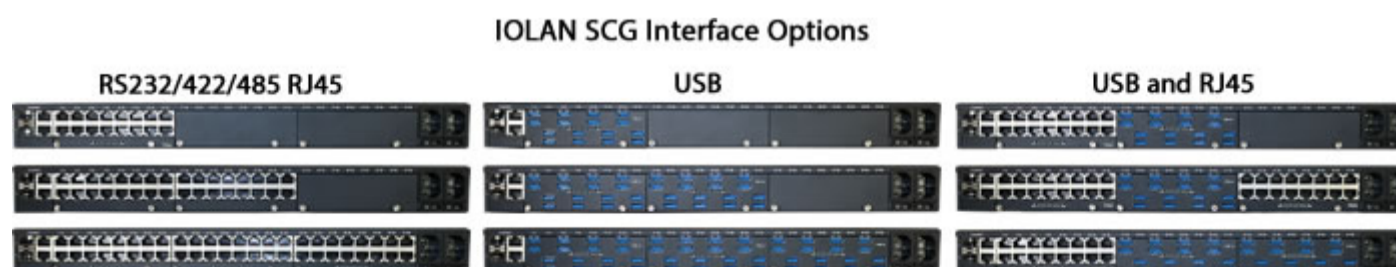
[Overview](#)
[Features](#)
[Hardware](#)
[Diagrams](#)
[Documentation](#)
[Ordering Details](#)

The **Perle IOLAN SCG LWM Console Servers** provide data center managers with the ultimate solution for redundant, secure remote console management of any device with an **RS232 RJ45 or USB console port**. And, the IOLAN G16 RS-Multi Card, with 16 x software-selectable RS232/422/485 RJ45 interfaces enables organizations to connect a variety of serial-based devices to Ethernet. The integrated WiFi, V.92 modem, and LTE support provides multiple alternate access methods to manage, maintain, and troubleshoot critical network devices, as well as **transmit data from mission-critical equipment over LTE and wireless LAN networks**. With an expandable modular hardware platform, **integrated firewall, two-factor authentication, advanced failover to multiple networks, and Zero Touch Provisioning (ZTP)**, your IT professionals and network operations center (NOC) personnel will have everything they need to easily perform secure remote data center management and out-of-band management of IT assets from anywhere in the world. This cost-effective 1U rack solution also maintains protocol integrity across Ethernet and adds full IPv4/IPv6 routing capabilities with support for RIP, OSPF, and BGP protocols.



## Modular Hardware Platform enables Console Management of all IT assets

The **modular IOLAN SCG LWM Console Server** provides up to **50 Console Management ports supporting USB, RS232, RS422, and RS485 interfaces**. The modular design of the IOLAN SCG allows the user to swap, upgrade, and scale to any combination of 16-port module cards to support all types of admin ports in one Console Management solution.



The Perle IOLAN SCG is the only industry solution that can support up to 50 high-density USB 3.0 ports that are compatible with all manufacturers' USB solutions, including Cisco routers, switches, firewalls, servers (Solaris, Windows, Unix and Linux) PBXs, network storage equipment and security appliances.

The RS232 RJ45 ports are software configurable to use straight thru or rolled cables to connect your Cisco equipment and support DCD pin can be configured for 3rd party devices that need this extra signal. The software-selectable RS232/422/485 RJ45 interfaces simplify configuration and eliminate mechanical tampering associated with DIP switches. This mean the Perle IOLAN SCG supports more serial devices than any other Console Server on the market.

# Advanced Network Security, Authentication, and Data Encryption

**2 Factor Authentication (2FA)** ensures access to equipment and data is limited to authorized users, while remote authentication (RADIUS, TACACS+, & LDAP) management, enables integration with enterprise-grade systems to control access to devices in the field.

The **built-in firewall** offers intuitive policies to protect inside networks from unauthorized access. The firewall also allows inside networks to be separated from each other. If there are network resources that need to be available to an outside user, such as a web or FTP server, these resources can be placed on a separate network behind the firewall in a demilitarized zone (DMZ).

Network data transmissions and access to remote console admin ports on IT equipment are protected through standard **encryption tools** such as Secure Shell (SSH) and Secure Sockets Layer (TLS/SSL). By using encryption technologies, an IOLAN SCR Console Server protects sensitive and confidential data before being sent across a corporate Intranet or public Internet. For compatibility with peer encryption devices, all the major encryption ciphers such as AES, 3DES, RC4, RC2, and CAST128 are fully supported.

With multiple concurrent VPN sessions, OpenVPN, and [IPSec VPN](#), robust authentication and encryption of IP packets is provided at the network layer of the OSI model. This is ideal for multi-vendor interoperability within a network, providing flexibility and the ability to match the right solution for a particular application.

## Multiple Out-of-Band (OOB) access methods

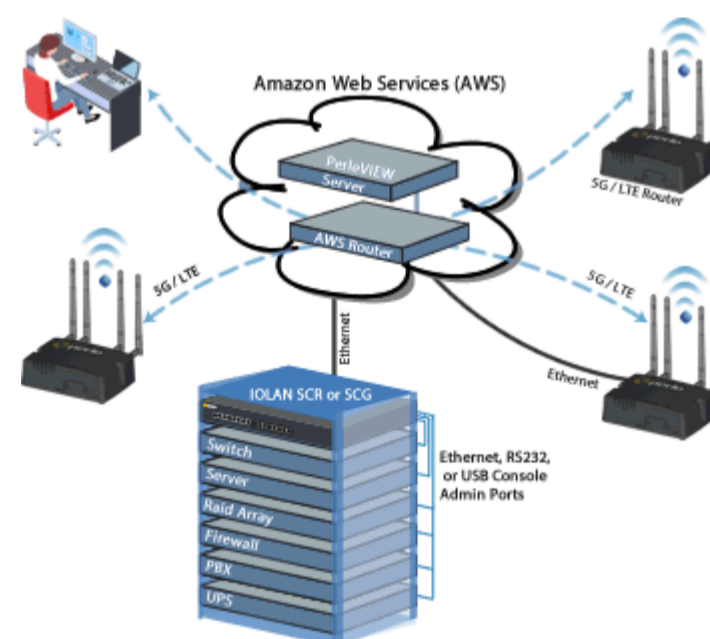
Every IOLAN SCG LWM Console Server comes with four secure remote access methods to critical network devices.

1. The **built-in high-speed LTE with HSPA+, UMTS, EDGE and GPRS/GSM fallback networks** to protect your data center and branch office out-of-band management infrastructure against wired LAN failure. It can also be used to transmit serial data or establish a direct serial to serial peer connection, over cellular networks. This is ideal when devices are located where hardwired Ethernet connections are not available but cellular networks, with their affordable data packages, are accessible.
2. **Built-in WiFi network access over dual-band radio antennas** provides optimal wireless performance, signal reliability, and range. With broad range support of Wireless LAN Technology (IEEE 802.11 a,b,g,n @ 2.4Ghz/5Ghz) and fast wireless speeds up to 150Mbps, the IOLAN SCG LWM is ideal to ensure you always have access to critical network devices.
3. The **on-board RJ11 V.92 modem connection** provides a secure and reliable out-of-band connection over the POTS network. This means that should IP network access become unavailable, the IOLAN SCG LWM can serve as the necessary alternate access method to troubleshoot and reboot critical network devices.
4. Any dual combination of the **two 10/100/1000Base-T Copper Ports and two 100/1000Base-X SFP Fiber Ports** can be used to meet your unique network access requirements. This design provides users with a flexible, cost-effective solution to transmit data from mission-critical equipment over Copper or Fiber based Ethernet networks. When connecting to a fiber network, the pluggable SFP ports allow for flexible network configurations using [SFP Optical Transceivers](#) supplied by Perle, [Cisco](#) or other manufacturers of MSA compliant SFPs.

## High Availability Access

To simplify management and respond swiftly to issues, network administrators require access to all console ports via a single portal view. Perle's cloud-based centralized management solution puts all your network and IT infrastructure into a single application and provides secure reliable access and visibility during normal operations and critical network failures. Scalable to suit any business requirement, [Cloud Centralized Management](#) reduces human error and guarantees repeatability.

The IOLAN SCG LWM also has built-in fault-tolerant capabilities to ensure secure and reliable access for managing important mission-critical equipment. [Redundant Path technology](#) assures availability to Console Management ports through Active Standby or Dual Network Access modes. Virtual Router Redundancy Protocol (VRRPv3) enables a group of devices to form a single virtual device to provide network redundancy. The dual AC power supply ensures that console management is available even if the primary AC power source fails. And, protection against electrostatic discharges and power surges is provided with robust 15Kv ESD protection circuitry on each console port.



## Easy Set-up and Configuration with Front Panel Display and Keyboard

The IOLAN SCG LWM is incredibly easy to get up and running on the network. The Front Panel Display and Keyboard allows a user to assign an IP address directly through the display without a direct PC connection. The rest of the unit can then be configured over the network using a variety of configurator options including [PerleVIEW](#), WebManager, CLI, etc.

The Front Panel Display is also a convenient way to monitor and trouble-shoot RS232, USB, and Ethernet port activity.

For large scale roll-outs, the Micro SD Card slot can be used to back-up and restore configuration files as well as load new firmware. Perle is committed to eliminating configuration hassles for all IOLAN's on your IP network.

## Flexible and Reliable Serial to Ethernet Connections

An IOLAN SCG Console Server is ideal for connecting serial based COM port, UDP or TCP socket based applications to remote devices. Perle's [TruePort re-director](#) provides fixed TTY or COM ports to serial based applications enabling communication with remote devices connected to Perle IOLAN's either in encrypted or clear text modes.

[TrueSerial® packet technology](#) delivers the most authentic serial connections across Ethernet for serial protocol integrity.

You can also tunnel serial data between devices across an IP network.

## Advanced IP Technology

With support for IPv6, the IOLAN SCG provides organizations with investment protection to meet this rapidly growing standard.

Demand for IPv6, which is compatible with IPv4 addressing schemes, is driven by the need for more IP address. With the implementation and rollout of advanced cellular networks, a robust method is needed to handle the huge influx of new IP addressable devices on the Internet. In fact, the US Department of Defense has mandated that all equipment purchased be IPv6 compatible. In addition, all major Operating Systems such as Windows, Linux, Unix, and Solaris, as well as routers, have built-in support for IPv6.

It is therefore important for end users and integrators to select networking equipment that incorporates the IPv6 standard. The IOLAN line with support for IPv6 already built in is the best choice in serial to Ethernet technology.

## More reasons that make the IOLAN SCG Console Servers the preferred choice:

- Cellular data speeds up to 100Mbps
- Direct serial to serial peer connection over cellular data networks
- Remote equipment console management over cellular data networks
- As a wireless client proxy, provides wireless connectivity to central access points for serial and Ethernet devices
- Can provide a direct serial to serial peer connection over wireless
- Software Access Point ([SoftAP](#)) for up to 6 wireless clients.
- Fast Wireless Roaming capability is ideal for mobile applications where the IOLAN can transparently roam between APs (Access Points) that share the same ESS (Extended Service Set)
- Primary/Backup host functionality enables automatic connections to alternate hosts should the primary TCP connection go down.
- [EasyPort Web](#) – Access equipment serial console ports by using your Java-enabled Internet browser
- Java-free browser access to remote serial console ports via Telnet and SSH.
- [Dynamic DNS](#) – Easy console management access from anywhere on the Internet.

## Lifetime Warranty

All Perle IOLAN SCG models are backed by the best service and support in the industry including Perle's unique lifetime warranty. Since 1976 Perle has been providing its customers with networking products that have the highest levels of performance, flexibility, and quality. With the Perle IOLAN SCG deploying and upgrading new services and equipment while minimizing capital expenditures, is easy.

[Back To Top](#)

- [Products](#)
- [Applications](#)
- [About Perle](#)

- [Contact Us](#)
- [How to Buy](#)
- [Technical Support](#)

- [Site Map](#)
- [Legal Information](#)
- [Privacy & Cookie Policy](#)

Products by Perle



**Follow Perle**

Copyright © 1996 - 2022 Perle. All Rights Reserved

## Send us an Email

×

Have a Question?

We can provide more information about our products or arrange for a price quotation.

Send an Email

[Call Us](#)