
[Products Console Server IOLAN SCR1618](#)

Print PDF

# IOLAN SCR1618 Secure Console Server

## In-Band and Out-of-Band IT Infrastructure Management



- 16 x RS232 RJ45 Console Management Ports
- 16 x Ethernet RJ45 Console Management Ports
- 2 x SFP Slots supporting 1G/2.5G Fiber or 10/100/1000Base-T
- [PerleVIEW Central Management Software](#) simplifies configuration, administration, monitoring, and troubleshooting.
- [Cloud Hosting](#) -- Deploy and manage your network from the cloud
- Advanced routing engine with AAA security and SSH/SSL encryption to meet all data center compliance policies

[Get a quote](#)
[Overview](#)
[Features](#)
[Hardware](#)
[Documentation](#)
[Ordering Details](#)

The **IOLAN SCR1618 Console Server** provides data center managers with secure remote console management of any device with an **RS232 or Ethernet RJ45 console port**. This cost-effective 1U rack solution maintains protocol integrity across Ethernet and adds full IPv4/IPv6 routing capabilities with support for RIP, OSPF, and BGP protocols. An **integrated firewall** and **two-factor authentication** enhance security while the powerful multi-core CPU ensures lightning-fast routing and switching. With **advanced failover** to multiple networks and **Zero Touch Provisioning (ZTP)**, the IOLAN SCR is ideal for data center management and out-of-band management of IT assets from anywhere in the world.

## Console Management for IT assets

The **IOLAN SCR1618 Console Server** supports **Ethernet and RS232 RJ45 connectivity to console ports** on equipment such as **Cisco, Juniper, HP, routers, switches, firewalls, servers, PBXs, network storage equipment**, and **security appliances** through an IP network. The RS232 RJ45 ports are software configurable to use straight thru or rolled cables to connect your Cisco equipment. In addition, a DCD pin can be configured for 3rd party devices that need this extra signal. This means the **Perle IOLAN SCR supports more serial devices than any other Console Server on the market**. This makes it an ideal out of band management solution for IT equipment located in data centers or remote sites.

## Advanced Network Security, Authentication, and Data Encryption

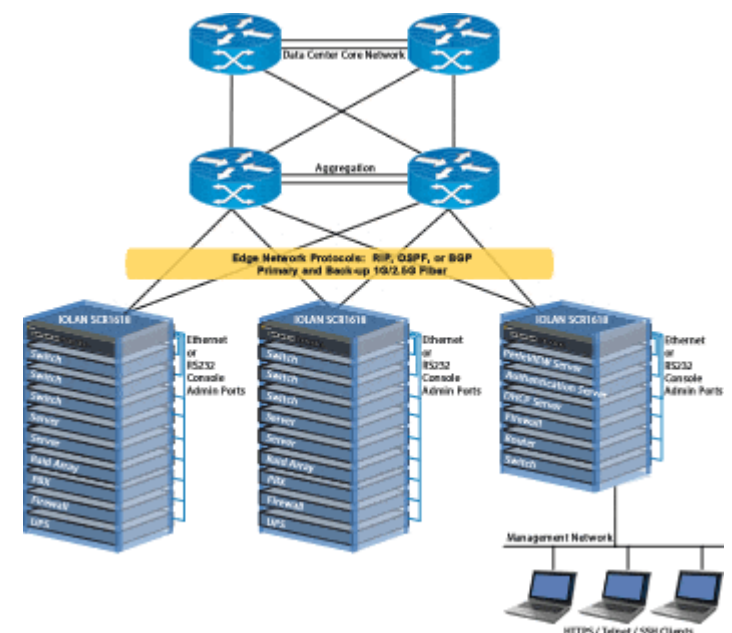
**2 Factor Authentication (2FA)** ensures access to equipment and data is limited to authorized users, while remote authentication (RADIUS, TACACS+, & LDAP) management, enables integration with enterprise-grade systems to control access to devices in the field.

The **built-in firewall** offers intuitive policies to protect inside networks from unauthorized access. The firewall also allows inside networks to be separated from each other. If there are network resources that need to be available to an outside user, such as a web or FTP server, these resources can be placed on a separate network behind the firewall in a demilitarized zone (DMZ).

Network data transmissions and access to remote console admin ports on IT equipment are protected through standard **encryption tools** such as Secure Shell (SSH) and Secure Sockets Layer (TLS/SSL). By using encryption technologies, an IOLAN SCR Console Server protects sensitive and confidential data before being sent across a corporate Intranet or public Internet. For compatibility with peer encryption devices, all the major encryption ciphers such as AES, 3DES, RC4, RC2, and CAST128 are fully supported.

With multiple concurrent VPN sessions, OpenVPN, and [IPSec VPN](#), robust authentication and encryption of IP packets is provided at the network layer of the OSI model. This is ideal for multi-vendor interoperability within a network, providing flexibility and the ability to match the right solution for a particular application.

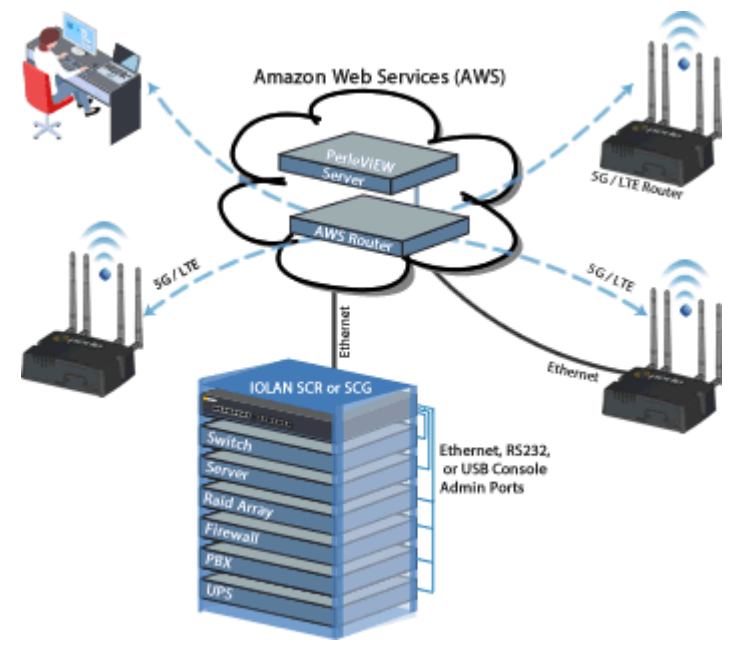
## High Availability Access



To simplify management and respond swiftly to issues, network administrators require access to all console ports via a single portal view. Perle's cloud-based centralized management solution puts all your network and IT infrastructure into a single application and provides secure reliable access and visibility during normal operations and critical network failures. Scalable to suit any business requirement, [Cloud Centralized Management](#) reduces human error and guarantees repeatability.

The IOLAN SCR has built-in fault-tolerant capabilities to ensure secure and reliable access for managing important mission-critical equipment. With 18 x Routing / Switching Ethernet interfaces, the IOLAN SCR provides multiple redundant network paths to ensure that console management access is available even if part of the network is down. The dual AC power supply ensures that console management is available even if the primary AC power source fails.

Protection against electrostatic discharges and power surges is provided with robust 15Kv ESD protection circuitry on each console port.



## Lifetime Warranty

All Perle IOLAN SCR models are backed by the best service and support in the industry including Perle's unique lifetime warranty. Since 1976 Perle has been providing its customers with networking products that have the highest levels of performance, flexibility, and quality. With the Perle IOLAN SCR deploying and upgrading new services and equipment while minimizing capital expenditures, is easy.

[Back To Top](#)

- [Products](#)
- [Contact Us](#)
- [Site Map](#)
- [Applications](#)
- [How to Buy](#)
- [Legal Information](#)
- [About Perle](#)
- [Technical Support](#)
- [Privacy & Cookie Policy](#)

Products by Perle



**Follow Perle**

Copyright © 1996 - 2022 Perle. All Rights Reserved

## Send us an Email

×

Have a Question?

We can provide more information about our products or arrange for a price quotation.

Send an Email [Call Us](#)